



CANADA DANCESPORT DRESSCODE

RULE 1: GENERAL RULES

1.01 General

1. Female athletes may not wear shorts, culottes or leotards alone but they can be worn with a skirt. Female Athletes must wear a skirt, dress or long trousers. Skirts and dresses must create Characteristic shape for each discipline (ST and LA) (shape area). In Standard Dress the lady's or girl's dress must have a long skirt which at minimum covers both her knees; if the skirt is split it must not be split higher than the knee. In Latin Dress the lady's or girl's dress must have a skirt made of fabric, fringe, feathers, beads or any other suitable material, and can be split or open on the sides, provided always that the skirt must completely cover the panties in front and in the back when standing still.
2. An athlete's costume must cover the intimate parts of that athlete's body ("the intimacy area").
3. A lady's or girl's dress and make-up must be appropriate for her age and the level of competition which is being danced.
4. In order to present a more modern and up-to-date image of DanceSport, a suit jacket with collared shirt and tie, or a vest with collared shirt and tie is recommended for the Junior II, Youth, Adult and Senior age groups.
5. Athletes may not use religious symbols as decoration or decoration jewellery but may use religious symptoms as part of their personal jewellery.
6. The Sanctioning Official and/or The Chairman has full authority to require any athlete to remove an item of jewellery or dress at any time if in the Chairman's opinion that item of jewellery or dress poses a potential danger to that athlete or to other competitors.
7. An athlete may compete wearing a costume which is required in a lower category.
8. The Chairman may suspend from competition any athlete who fails to comply with these guidelines or fails to comply with the Chairman's directions at a competition, and may direct the Scrutineer not to record the marks given to such an athlete in any competition in which the athlete fails so to comply.

1.02 Good Taste Rule

Any use of material or colour or construction or other contrivance that gives the appearance of non-compliance with these dress rules, even though there is no breach of the literal wording of these rules, will be a breach of these rules if so determined by the Sanctioning Official and/or Chairman of Adjudicators.

1.03 Sanctions

If a couple is not dressed in accordance with this Dress Regulation and receives a warning from the Sanctioning Official and/or the Chairman of Adjudicators, they must comply with the regulation or face disqualification **IMMEDIATELY BY THE SANCTIONING OFFICIAL AND/OR the CHAIRMAN OF ADJUDICATORS**. The Board may impose additional sanctions including suspension from competitions for repeat offenders.

1.04 Sanctioning Official

Sanctioning Official shall include an official representative from the Regional Board and/or Canada DanceSport or WDSF official present at the competition.

1.05 Advertising:

Advertising by up to four sponsors is allowed on a couple's competition costumes. A man or boy may advertise up to three sponsors, and a woman or girl may advertise only one sponsor. The size of the advertisements may be no more than 40 square cm for each sponsor. Such advertising may only be displayed and located on the waist, chest or sleeves. Each reproduction of any flag displayed on an athlete's costume constitutes one (1) sponsor for the purpose of this Rule.



RULE 2: DEFINITIONS OF TERMS

(B) **Black**– means black and midnight blue colour

(Bo) **Black colour only**

(C) **Any colour**– any colour including mixed colours

(CnS) **Any colour except skin colour**

(C1nS) **One colour except skin colour**

(IA) **Intimacy area**– body zones, which **must** be covered by non transparent materials or transparent materials lined with non transparent materials. If skin colour is used in an athlete's costume, it **must** be **SwD**.

(HL) **Hip Line**– panties top line (height), equals straight horizontal line, the top of the cleft or line between buttocks muscles (intergluteal line) **must not** be visible.

(LE) **Light Effects**- Any material that glitters or shines under the lights.

(LS) **Long Sleeves/ed**– length to the wrist, rolled up sleeves are **NA**

(NA) **Not allowed**

(NR) **No restriction**– there are no restrictions in this matter

(OA) **Only allowed**

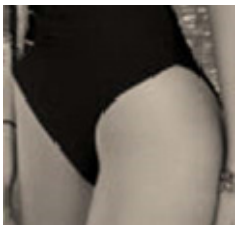
(PL) **Panty Line**– panties bottom line (height)

- back side – whole buttocks are covered
- in the front – follows line between flexed leg and body

The following illustration shows the minimum degree of coverage required by this Rule:



The following illustration is an example of a degree of exposure which is not permitted under this Rule:



The distance between **HL** and **PL** on the **side must** be **totally covered with more than 5 cm** (greater than 2") of material



(S) Skin colour– the same colour as of the dancer’s skin during the competition (with tan)

(SA) Shape area– minimum area which **must** be covered. Transparent materials are allowed in these areas: the waist, shoulders, back to the waist and sleeves. Any colour is allowed.

(SwD) Skin colour with decoration

(TOP) Man’s Top Opening Point– point, to which top or shirt can be opened equals centre of the belt buckle or centre of the trousers top line

(W) White colour

For the Female partner:

- tangas/thongs are **NA**.
- skin colours panties are **NA**.
- breasts **must** be covered
- distance between bra cups **must** be **less than 5 cm (less than 2”)**.
- Where stated that two-piece dresses are NA, this refers to a skirt and top where there is a gap of any size between the top and the bottom. A skirt and blouse/leotard is allowed as long as there is no gap showing any skin between the top and bottom when standing still or moving.
- A **Float** is any material that flows behind the dancer while in motion. A long scarf, sleeves that are not tight against the wrist, material that is attached from sleeve to sleeve or sleeve to shoulder and is not sewn to the basic material of the dress is considered a float.

Basic material – creates shape of the dress

- with light effects (metallic, glitter, sequins, ...)
- without light effects

Decoration – anything fixed on the basic material, hair, skin:

- with light effects (rhinestones, sequins, beads, pearls, ...)
- without light effects (feathers, flowers, bows, fringe, lace applications, ribbons, ...)

Tie clips, studs, cufflinks, buckles are not defined as decorations.

Make-up – includes face make-up, artificial tan, artificial nails, artificial eyelashes.

Decoration jewellery – jewellery designed to be a part of a dance dress